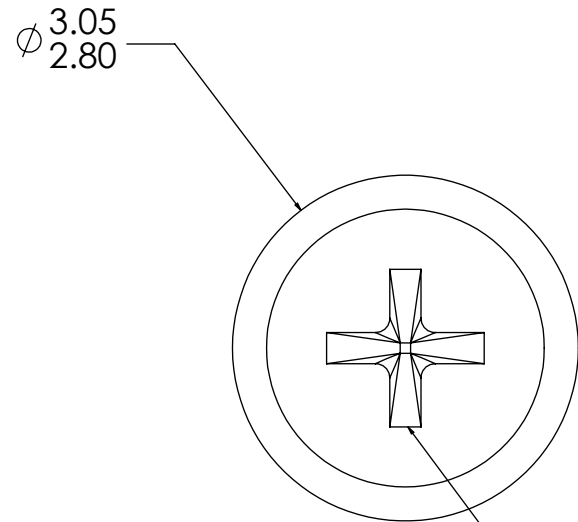
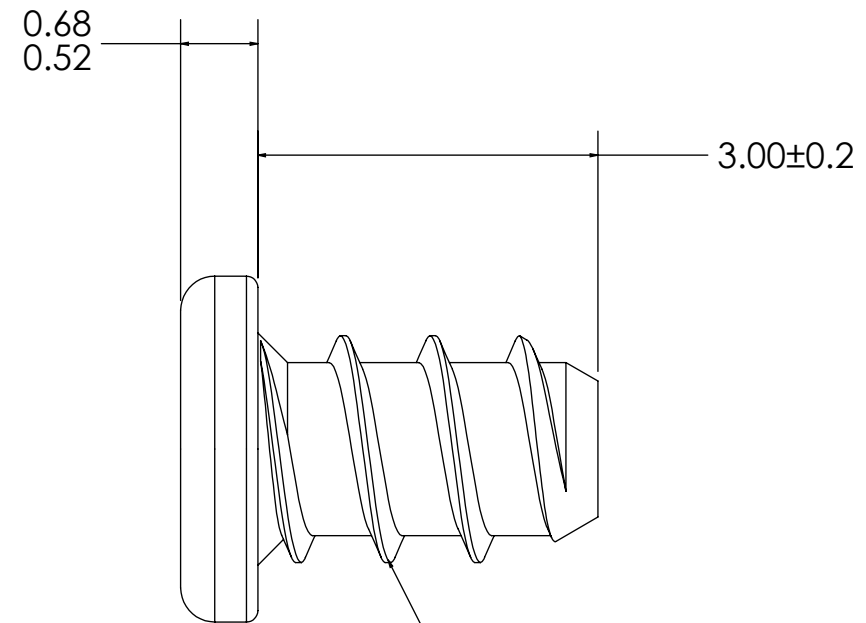
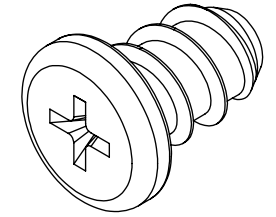


REVISIONS		
REV.	DESCRIPTION	DATE
01	INITIAL RELEASE	2014 06 24



#0 PHILLIPS DRIVE

M2 x 0.79 TRILOBULAR PLASTIC FORMING THREADS

DIMENSIONS ARE IN MM (INCHES) TOLERANCES:  <table border="0"> <tr> <td>LINEAR</td> <td>ANGLE</td> </tr> <tr> <td>X.X ±0.5</td> <td>X° ±1°</td> </tr> <tr> <td>X.XX ±0.1</td> <td>X.X° ±0.5°</td> </tr> </table>		LINEAR	ANGLE	X.X ±0.5	X° ±1°	X.XX ±0.1	X.X° ±0.5°	 <a href="http://www.usmicroscrew.com">www.usmicroscrew.com</a>	
LINEAR	ANGLE								
X.X ±0.5	X° ±1°								
X.XX ±0.1	X.X° ±0.5°								
MATERIAL 1018 STEEL, CASE HARDENED		TITLE: <b>M2 UNDERSIZED PAN HEAD</b>	REV <b>01</b>						
FINISH ZINC PLATE (ROHS)		SIZE <b>B</b>	DWG. NO. <b>M20-30-P-Z-UP</b>						
		SCALE: 15:1	WEIGHT: SHEET 1 OF 1						