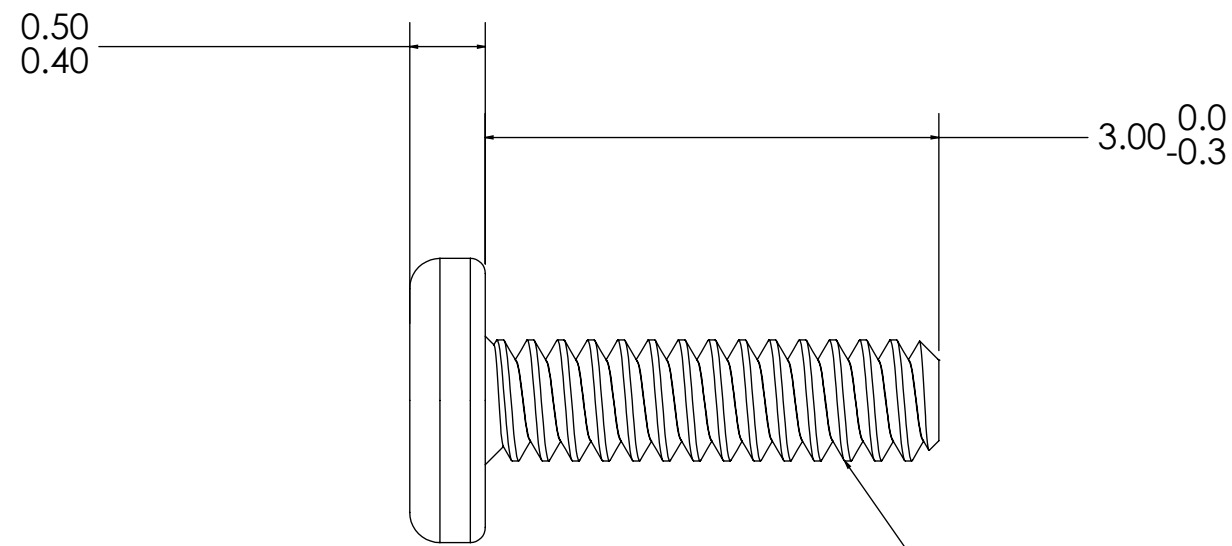
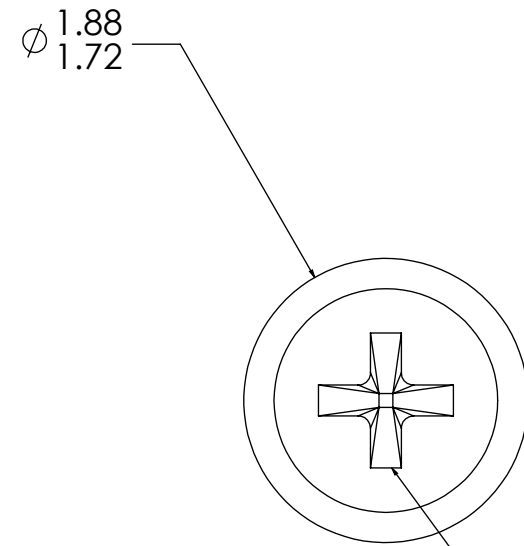
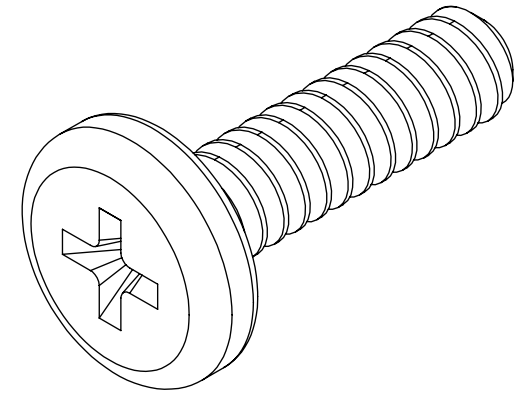


REVISIONS		
REV.	DESCRIPTION	DATE
01	INITIAL RELEASE	2014 04 21



M0.8 X 0.2 THREADS

#0 PHILLIPS DRIVE

DIMENSIONS ARE IN MM (INCHES) TOLERANCES: <table border="0"> <tr> <td colspan="2">LINEAR</td> <td colspan="2">ANGLE</td> </tr> <tr> <td>X.X</td> <td>±0.5</td> <td>X°</td> <td>±1°</td> </tr> <tr> <td>X.XX</td> <td>±0.1</td> <td>X.X°</td> <td>±0.5°</td> </tr> </table>		LINEAR		ANGLE		X.X	±0.5	X°	±1°	X.XX	±0.1	X.X°	±0.5°	 www.usmicroscrew.com	
LINEAR		ANGLE													
X.X	±0.5	X°	±1°												
X.XX	±0.1	X.X°	±0.5°												
MATERIAL 302 STAINLESS STEEL		TITLE: M0.8 PAN HEAD													
FINISH PASSIVATE TO ASTM A380		SIZE B	DWG. NO. M08-30-M-SS-P												
		SCALE: 20:1	REV 01												
		WEIGHT:	SHEET 1 OF 1												